

# **EBELCO<sup>®</sup>**

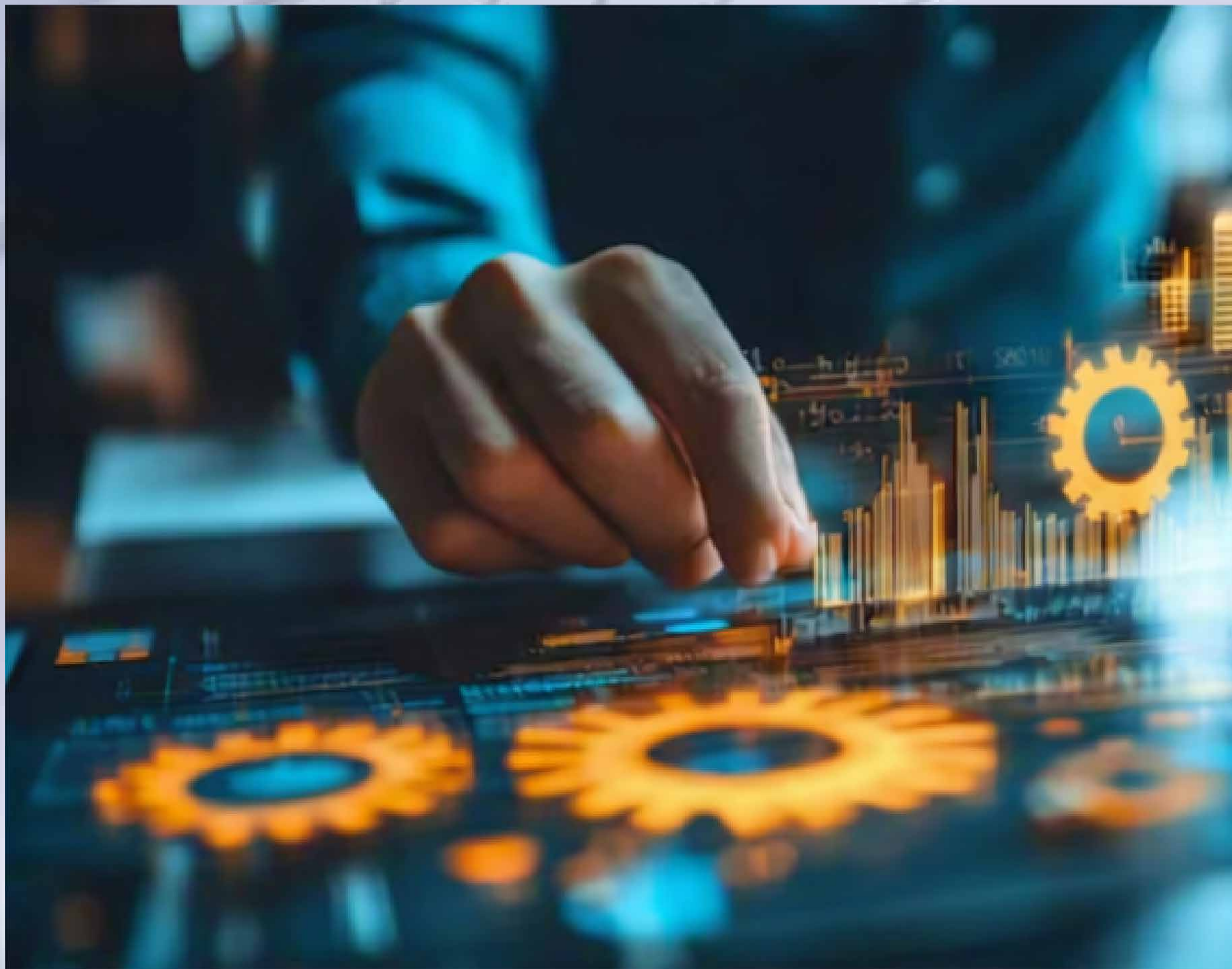
# **COMPANY**

# **PROFILE**

**EBELCO Industries Sdn. Bhd.**



# Company Overview



**SECURITY  
QUALITY  
RELIABILITY**

SECURITY, QUALITY, RELIABILITY represents **EBELCO's** core value commitment to deliver trusted access control solutions. From product design to manufacturing, every detail is engineered to safeguard people and property, uphold consistent quality standards, and ensure long term, dependable performance in real-world applications.

## **CERTIFICATIONS & COMPLIANCES**



**EBELCO** products are designed and manufactured in compliance with major international standards which includes: - UL, CE , RoHS and TUV. These certifications ensure that our products meet international requirement for safety, environmental compliance and performance reliability, supporting smooth approval in overseas markets.



# Product Range



EBELCO offers a comprehensive range of access control system accessories, including but not limited to:

## **Electromagnetic Locks & Mounting Brackets**

Holding force from standard to high secured grades, compatible with various door types and installation requirements.

## **Magnetic Contacts**

Designed for door and window status monitoring with stable sensing performance.

## **Electromagnetic Door Holders**

Used for fire safety and controlled door release systems.

## **Door Exit Buttons**

Stainless Steel and Plastic Models for indoor and outdoor applications.

## **Override Key Switches**

Mechanical override solutions for emergency or authorized manual control.

## **Emergency Break Glass Units**

Designed for emergency door release, compliant with safety standards.

## **Others Door Access System Accessories**

Supporting components for intergrated access control solutions.

# About Us



**EBELCO Industries Sdn. Bhd. is a Malaysian professional manufacturer; Specialize in door access control systems and accessories. Established in the year 1993, EBELCO has more than three decades of manufacturing experience, serving customers across the global market with reliable, certified, and customizable security hardware solutions.**

**With our in-house manufacturing capabilities and strict quality control systems, EBELCO focuses on delivering technically compliant, durable and cost-effective products that meet international standards and diverse market requirements.**

## Mission & Vision



### Mission

**To manufacture access control products that comply with international safety & quality standards.**

**To support customers with flexible OEM/ODM customization services**

**To ensure stable supply, efficient logistics, and responsive technical support.**

### Vision

**To become a globally trusted manufacturer of access control hardware through engineering excellence, consistent quality and long term partnerships.**



# Company Culture



## Manufacturing & Quality Control

EBELCO operates with a structured manufacturing process supported by :

- > Controlled Material Sourcing
- > Standardized Production Procedures
- > In-Process Inspection
- > Final Quality Checks
- > Continuous Improvement based on Customer Feedback

## Client-Centric:

We prioritize our clients' needs, working collaboratively to deliver solutions that are not only effective but also aligned with their strategic goals.

## Results- Driven:

Our products are manufactured with a strong focus on durability, electrical stability, and installation compatibility. Making them suitable for commercial, industrial and institutional applications.

Our focus is on delivering tangible results that drive growth, efficiency and long-term success for our clients.

# OEM/ODM & Customization Capability



## **EBELCO provides flexible OEM / ODM Services, including:**

EBELCO operates with a structured manufacturing process supported by :

- > Product branding and logo printing
- > Customized specifications and product configurations
- > Packaging design adapted to local market requirements
- > Technical documentation support

Our engineering team works closely with customers to ensure customized solutions align with regulatory requirements and application needs.

# Global Market & Logistics Support



## **Serving Customer Worldwide, EBELCO had supporting experiences:**

- > Distributors and system integrators.**
- > OEM Partners**
- > Project - Based and Bulk Supply requirements**

## **Well-organized shipping arrangements, EBELCO Ensures:**

- > Stable Production Lead Time**
- > Flexible shipment planning ( FCL or LCL )**
- > Reliable export documentation support**

**Why EBELCO ?**

# **SUCCESS IS A DECISION**

- > Over 30 years of manufacturing experiences**
- > Certified products meeting international Standards**
- > Strong quality consistency and cost efficiency**
- > Flexible customization and OEM support**
- > Professional technical and export support**

# CONTACT US



## Reach Out

For general inquiries, partnership opportunities, and service requests. We aim to respond to all emails within 24 hours.

**TEL: +606-333 8855**

**FAX: +606-333 8822**

**WEB: [www.ebelco.com](http://www.ebelco.com)**

**EMAIL: [enquiry@ebelco.com](mailto:enquiry@ebelco.com)**

ADDRESS: No.16, Jalan TTC 26, Taman Teknologi Cheng, 75250 Melaka, Malaysia.